

# 8<sup>th</sup> Australian Lung Cancer Conference

Melbourne Convention and Exhibition Centre  
19 - 21 February 2020

A time of *hope*  
in lung cancer

Thanks to our event sponsors:

Platinum



AstraZeneca



Gold



Bristol-Myers Squibb



MSD

Silver



Lung  
Foundation  
Australia  
Celebrating 30 Years

In collaboration with:



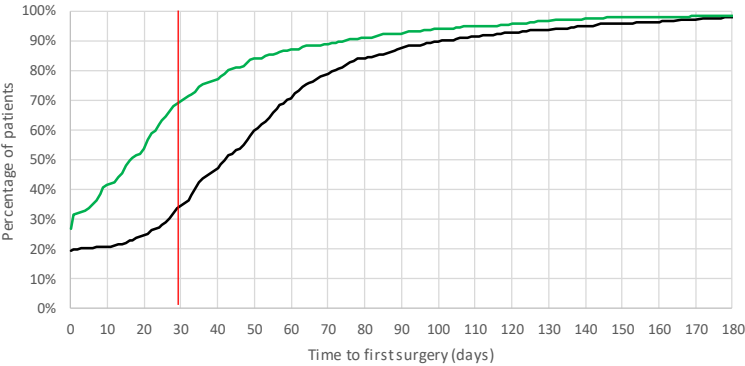
Lung  
Foundation  
Australia  
ANZ Lung Cancer Nurses Forum



# Timely Lung Cancer Care is Influenced by Stage at Diagnosis, A Population-Wide Study from Qld

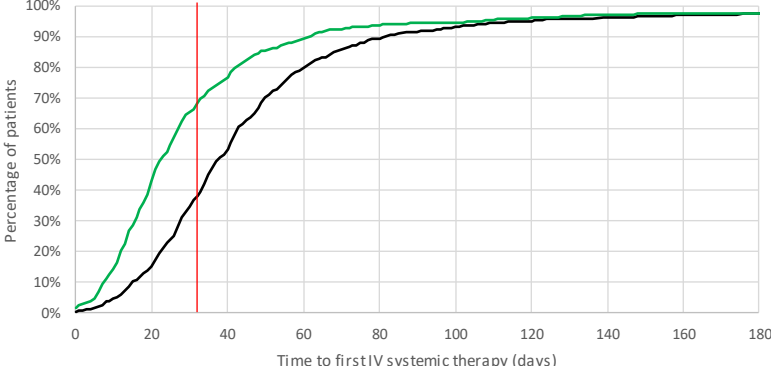
**8<sup>th</sup> Australian Lung Cancer Conference**  
 Melbourne Convention and Exhibition Centre  
 19 - 21 February 2020

## Surgery median days to treat = 30



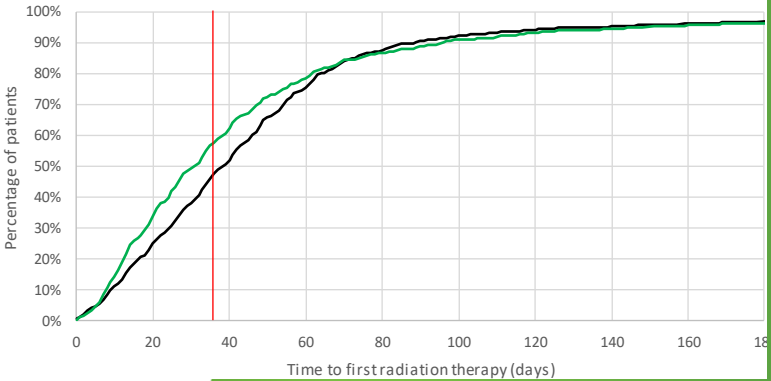
— Median public days: 43  
 — Median private days: 17

## Systemic therapy median days to treat = 32



— Median public days: 38  
 — Median private days: 23

## Radiation therapy median days to treat = 36



— Median public days: 39  
 — Median private days: 31

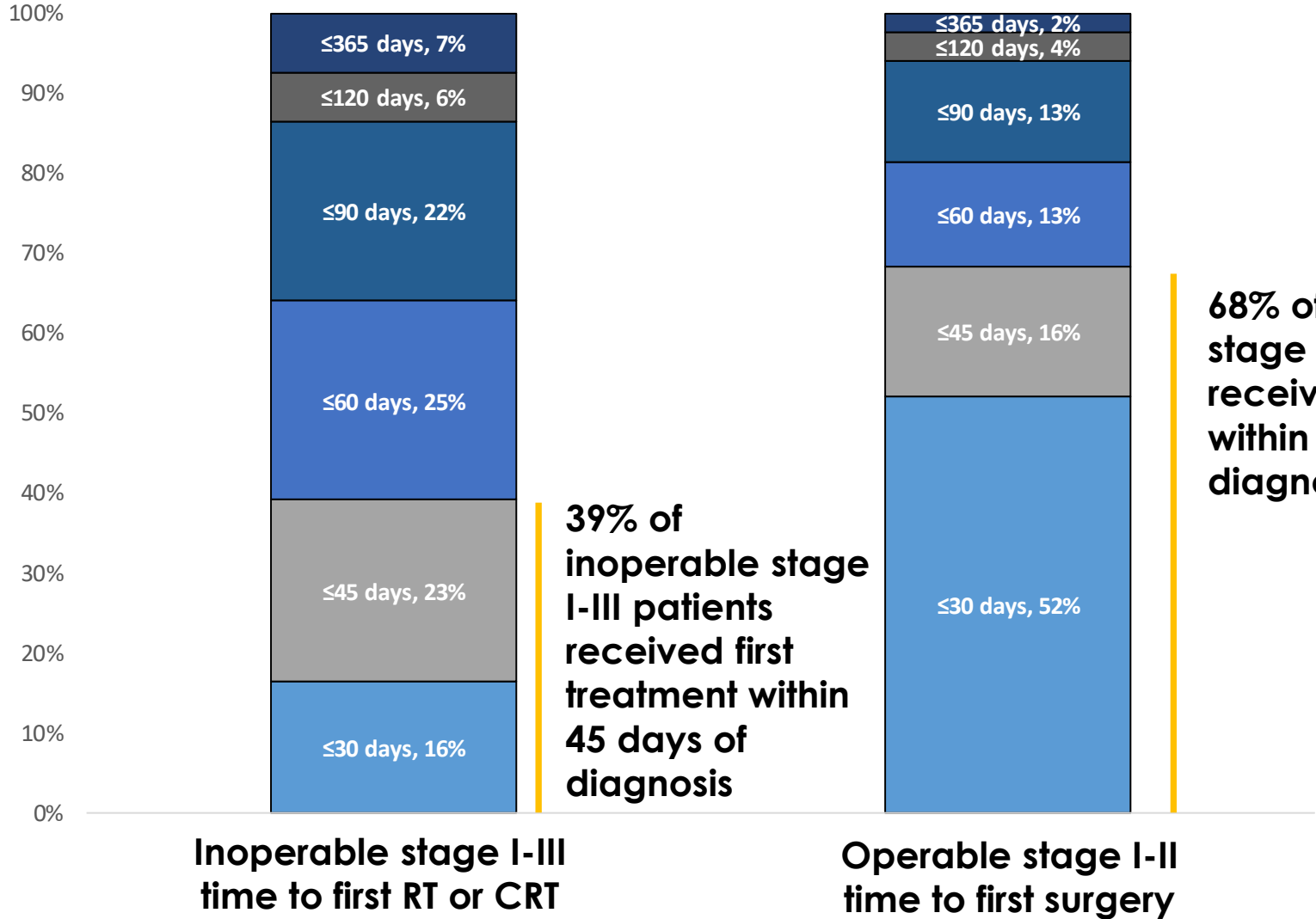
A time of *hope* in lung cancer



Note this analyses shows median days from diagnosis to **first** treatment

# Treatment timeliness for NSCLC by stage and treatment modality

**8<sup>th</sup> Australian Lung Cancer Conference**  
 Melbourne Convention and Exhibition Centre  
 19 - 21 February 2020



In collaboration with:



This is a brief extract from the presentation.  
If you would like more information, please contact us



[CancerAllianceQld@health.qld.gov.au](mailto:CancerAllianceQld@health.qld.gov.au)



*cancer alliance*  
queensland